

## Abrasive products

### Conveying of very abrasive products

For many years, the Simatek Universal Elevator has been acknowledged for its technology in conveying bulk products for the food and process industry.

Our elevators are mainly used for conveying of granulates, powders, grain shaped and pelletized products with flexibility and fragile handling as essential parameters.

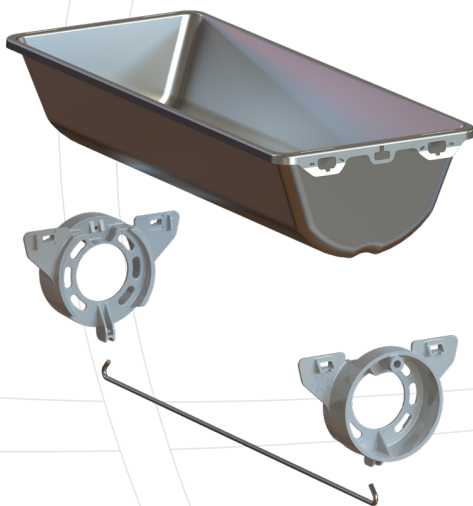
With our solid knowledge of bulk product conveying, Simatek Bulk Systems A/S has developed known technology to now include conveying solutions for very abrasive products.

In order to handle abrasive bulk products, the following 3 criteria are important:

1. Wearable construction - ensuring a long interval between service
2. Service friendly - all wear parts are mounted directly on the elevator chain which enables replacement through a service window
3. Short operational stop during planned service - typically 1 - 3 hours

### FRB buckets

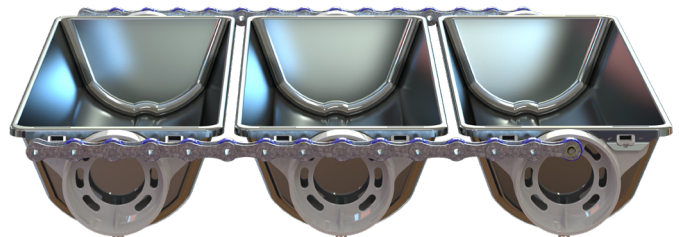
Buckets without mechanical contact prevents wear and the risk of conflict between the buckets.



Bearing suspended buckets are supported by a rail made in wear-resistant plastic which will have a much better durability than the traditional chain system.

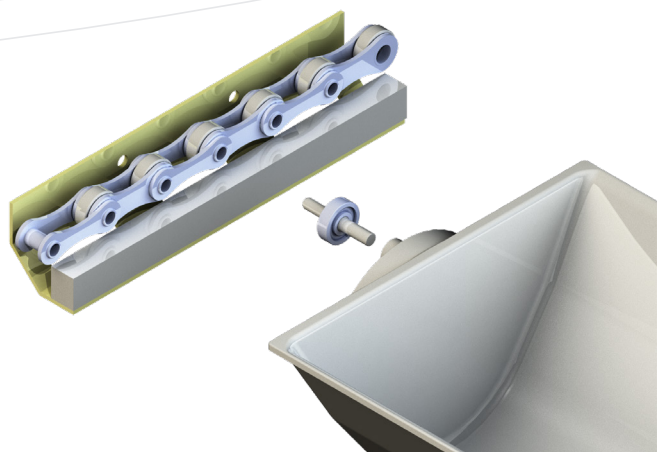
With this solution, the chain has no rolling function, thus no roller chain wear.

Servicing these buckets is quick via easily accessible service door.



There are two types of FRB buckets:  
Injection moulded plastic and pressed stainless steel.

As an option, FRB buckets may be delivered with replaceable gables in a wear-resistant material.

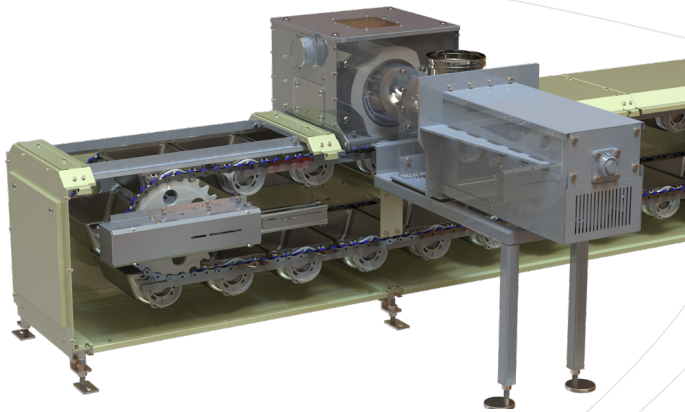
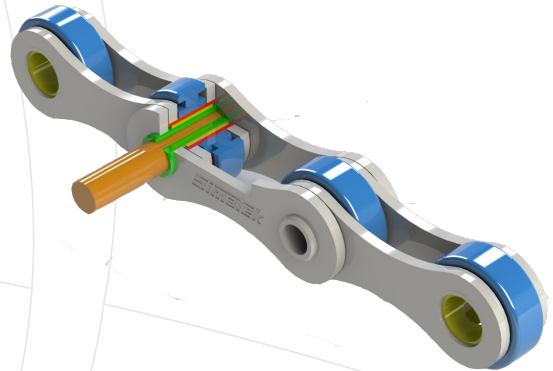


## Abrasive products

### Elevator chain

As an option, the roller chain may be delivered in a lubrication free version.

The chain will be adjusted according to the product specifications and is available in a special wear-resistant version.



### Simatek Drum Feeder

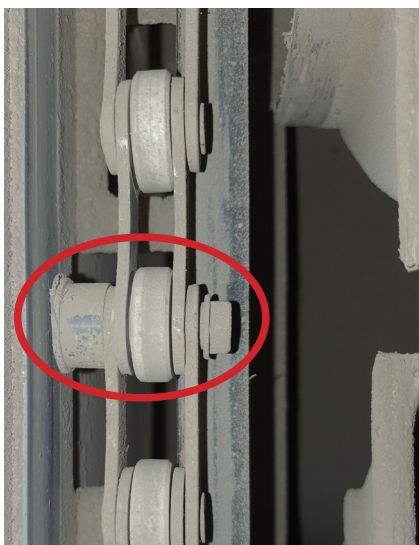
Individual filling of the elevator buckets will ensure a high filling degree without product waste.

A special Forced Feeding System is available and may be added as an option for products with poor flow properties.

### DCR chain guides

Traditionally, our Universal Elevators are produced with static chain guides for control of the chain function.

The wear-resistant Dynamic Chain Guide (DCG) is mounted directly on the elevator chain and can be serviced via a service window.



### Service

Wear parts are mounted on the elevator chains and can be easily replaced through a service door.

Replacement of the chain can also be carried out through the service window.

