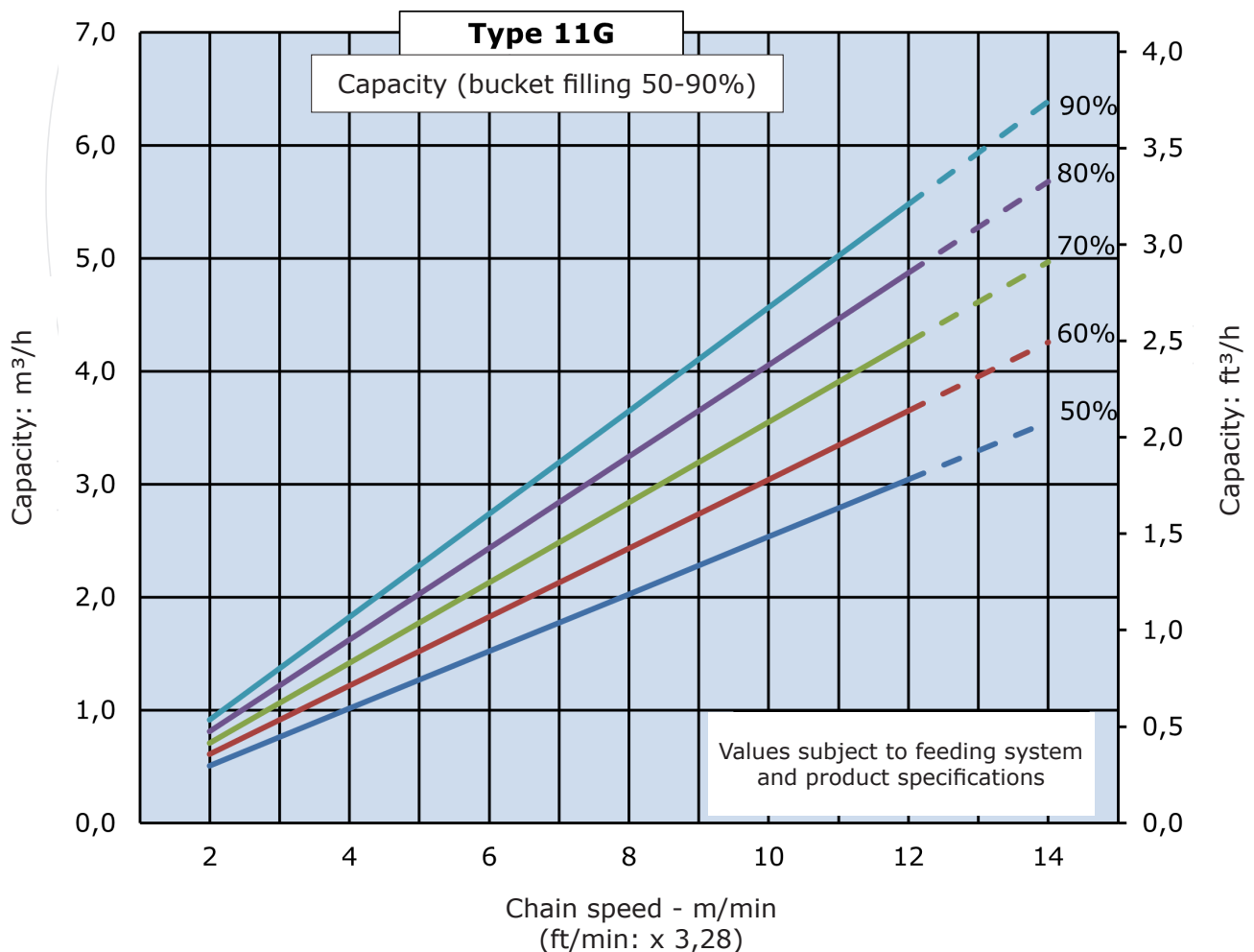


Universal Elevator Type 11G

Technical data

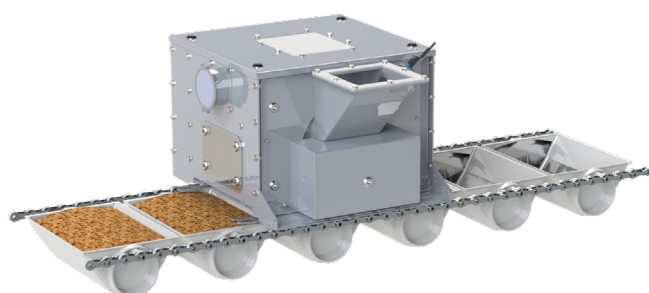
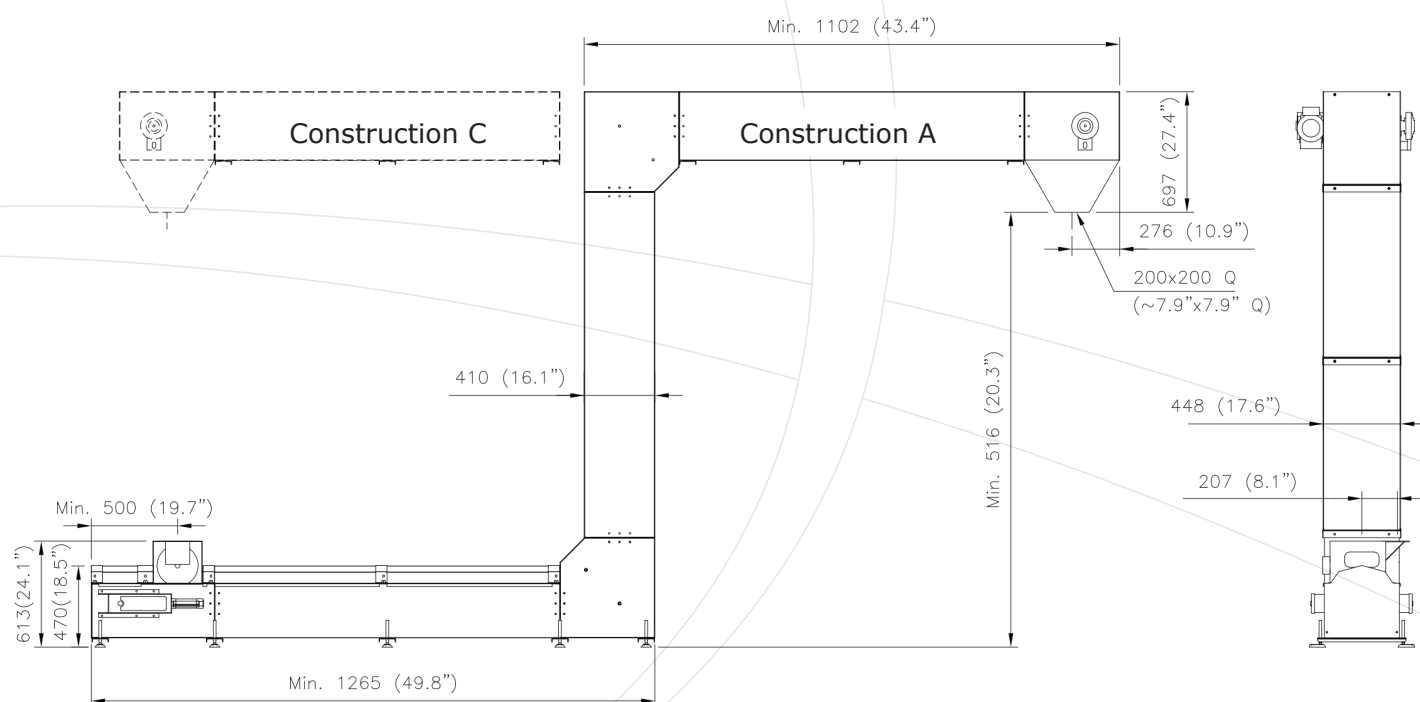
Applications	powder, granulates, pellets, grain & seeds
Execution	design: closed w/inspection doors Material: galvanized steel / powder coating / stainless steel
Buckets	type: standard / FRB Size: 1,3 liters Material: PP-Glass / PP-Glass-AS
Chains	material: mild steel / stainless steel
Chain tension	automatic, pneumatic operated w/ local control
Intermediate outlet(s)	pneumatic operated (optional)
Inlet, feeding system	Open / Simatek Drum Feeder
Overload protection	Electronic

Capacity



Universal Elevator Type 11G

Measurements



Drum feeder
 Continuous Batch Feeding System
 conveying with FRB buckets without overlap
 for most free flowing products.
 Filling degree up to 95%



Standard inlet
 for most product types.
 Recommend filling degree up to 50%

